





We know just the place...



This charming three-bedroom, semi-detached house is located in Hove and boasts both off-street parking and a garden. The property is South facing and has been recently refurbished throughout. Aldrington Station is a ten-minute walk. Hove Park, Waitrose, a selection of shops and restaurants are all moments away.

On entering the property, the hallway is bright and spacious; from there you have access to all ground floor rooms. The reception is positioned at the front of the property, it is a good size and decorated in a contemporary fashion. The room is fitted with bespoke shutters and features a beautiful ornate fireplace. Next is the modern kitchen/dining room, complete with fully integrated appliances and an enviable centre island. The room is made bright with double doors that lead out into a wonderfully landscaped garden. Conveniently the property has a W/C downstairs, as well as a utility room.

The first-floor hallway is again spacious and gives access to all upper-level rooms. There are three good size bedrooms all with built-in storage space. On this level is the modern family bathroom, fitted with both bath and shower facilities.

Elm Drive is excellently positioned near Hove Park and Blatchington Mill Schools. The property also has easy access to the A270.



3



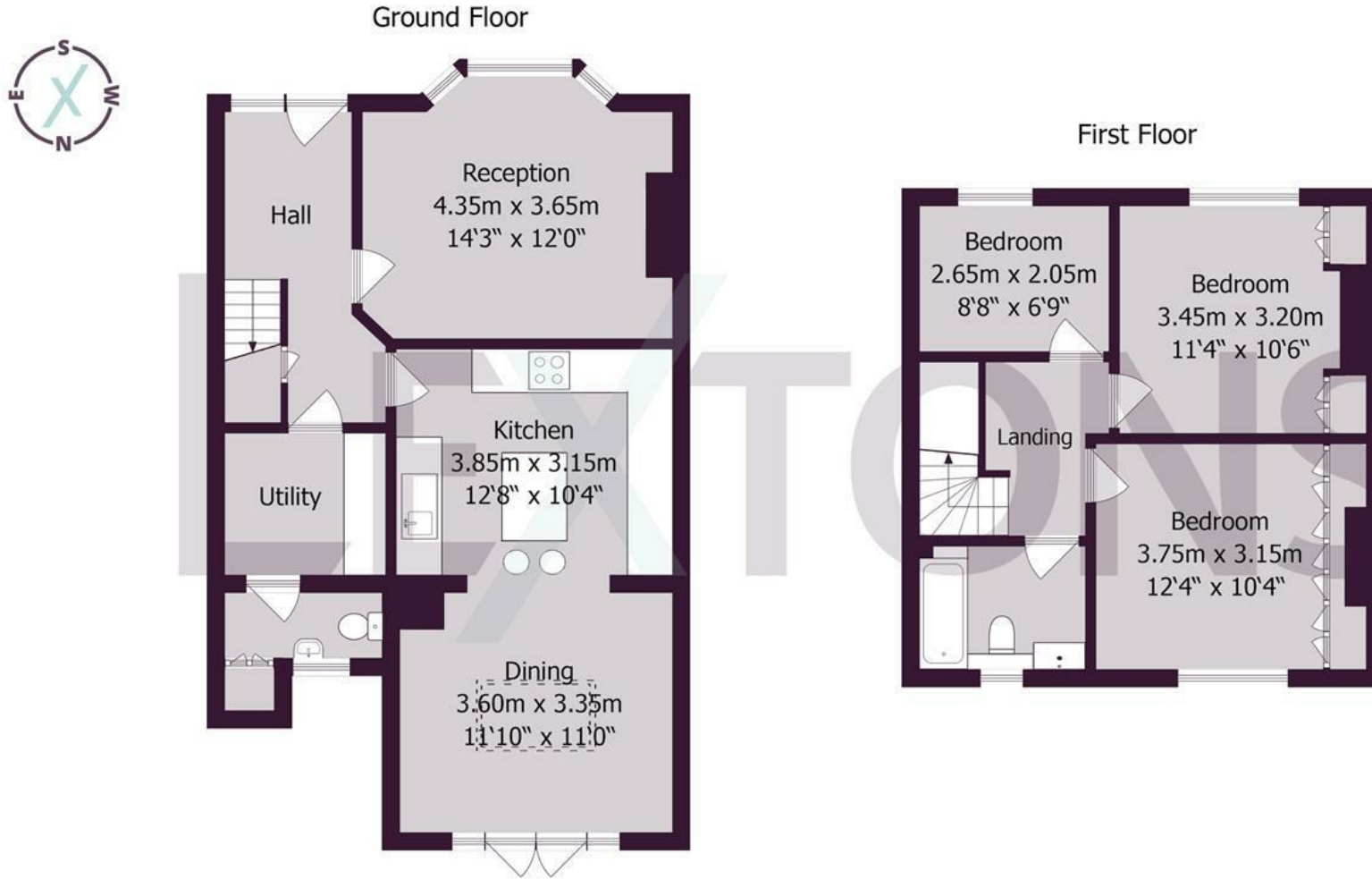
1



1



D



Approximate gross internal floor area 99 sq m/ 1066 sq ft

Whilst every care has been taken to ensure accuracy, dimensions are approximate and for illustrative purposes only.

Created by Property Photography UK for Lextons. All rights reserved.

Meet us here...
174 Church Road
Hove
BN3 2DJ

We aim to make our particulars both accurate and reliable. However they are not guaranteed; nor do they form part of an offer or contract. If you require clarification on any points then please contact us, especially if you're traveling some distance to view. Please note that appliances and heating systems have not been tested and therefore no warranties can be given as to their good working order.